

[View in browser](#)

Share  [in](#)   [DONATE](#)



Brought to you by the Myasthenia Gravis Foundation of America JUNE 2021

[MG Insider Blog](#) • [Research](#) • [Events](#) • [Get Involved](#)



MG Walks Will Be Virtual – Fundraising Efforts Continue Forward

Based on guidance from the MGFA Medical Advisory Board, MG Walks will not be in person this year but we are planning a Coast to Coast MGFA Walk event. Fundraising, team creation and support, and registrations continue forward. Read MGFA's Official statement.

[LEARN MORE](#)



Sponsored Ad

In Memory of Ed Walsh – A



Very Special Friend to the MG Community

It is with great sadness that we share that after a 15-year battle with cancer, former Board Chair Edward Walsh has passed away. [More»](#)

There is still time to Turn MG Awareness into Action

Submit your favorite recipes, participate in our Twitter chat, take a video and post on social media, and submit your photos to the MGFA Interactive Global Map. [More»](#)



Sponsored Ad



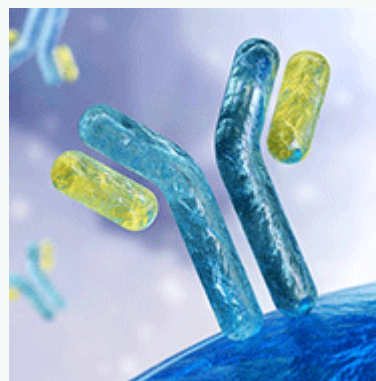
What is the MG Experience?

How can people who don't have MG understand the disease? Help them



Sleep Right, Sleep Tight

Rest and sleep are critical for patients with MG.



Rituximab May Not Work for all MG Patients

New research from Kevin O'Connor, PhD

through the MG
Experience.

[LEARN MORE](#)

[LEARN MORE](#)

[LEARN MORE](#)



US-NON-20-0003 10/20/20

See if you can help inform
myasthenia gravis research

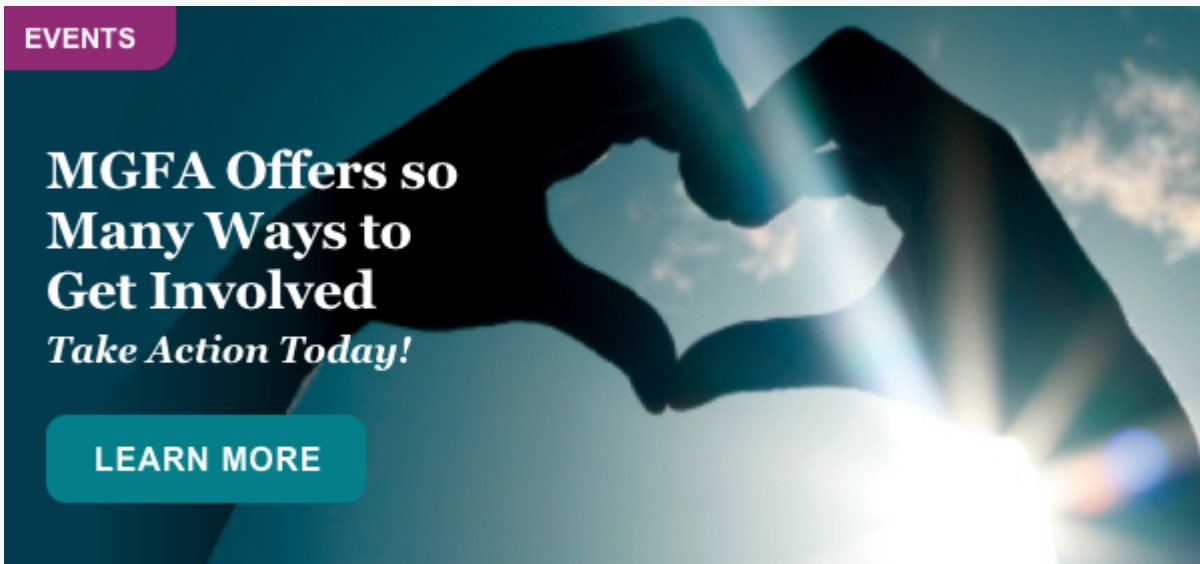
The more that's known, the more that's possible.

MyRealWorld™ MG

[JOIN THE STUDY*](#)

*Eligibility requirements apply

Sponsored Ad



EVENTS

**MGFA Offers so
Many Ways to
Get Involved**

Take Action Today!

[LEARN MORE](#)



Descartes-08

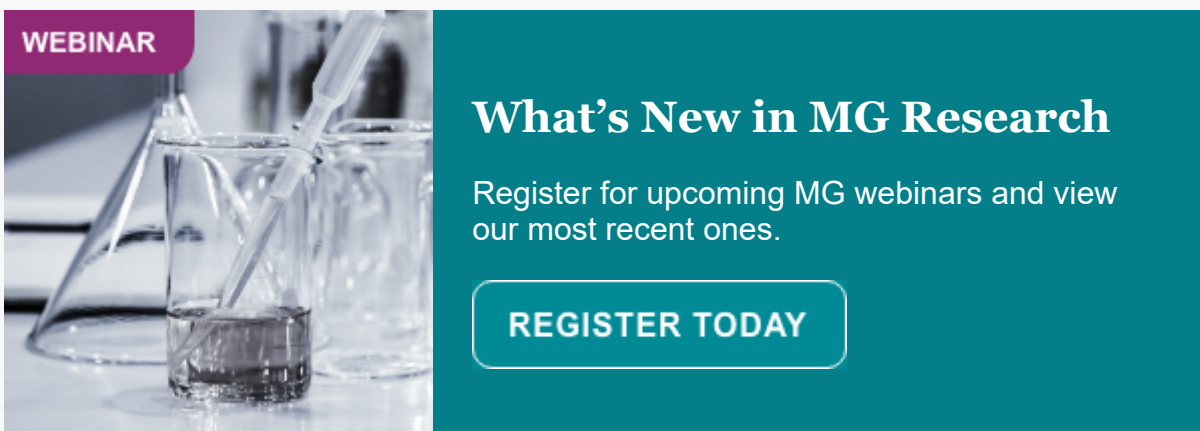
A new Phase I/II investigational RNA cell therapy
for patients with generalized Myasthenia Gravis

[Learn more](#)

Cartesian
THERAPEUTICS

NCT04146051

Sponsored Ad



WEBINAR

What's New in MG Research

Register for upcoming MG webinars and view
our most recent ones.

[REGISTER TODAY](#)

REGISTRY

MG Patients

Add your data to the MG Registry to help build effective trials to drive better treatments.



LEARN MORE

SUPPORT

Find Upcoming Support Groups Online

Meetings include All-Spanish-Speaking Events

LEARN MORE



Inspired by **patients.**
Driven by **science.**

Sponsored Ad

Is this monthly e-newsletter valuable for you and your family? Let us know. You can send comments directly to MGFA@myasthenia.org or contact Michael Antonellis at mantonellis@myasthenia.org.



Myasthenia Gravis Foundation of America
myasthenia.org • mgfa@myasthenia.org



[Manage your preferences](#)

Got this as a forward? [Sign up](#) to receive our future emails.

[View this email online](#). 290 Turnpike Road Suite 5-315 Westborough, MA | 01581 US

This email was sent to .

To continue receiving our emails, add us to your address book.